

Thermo-Sensor

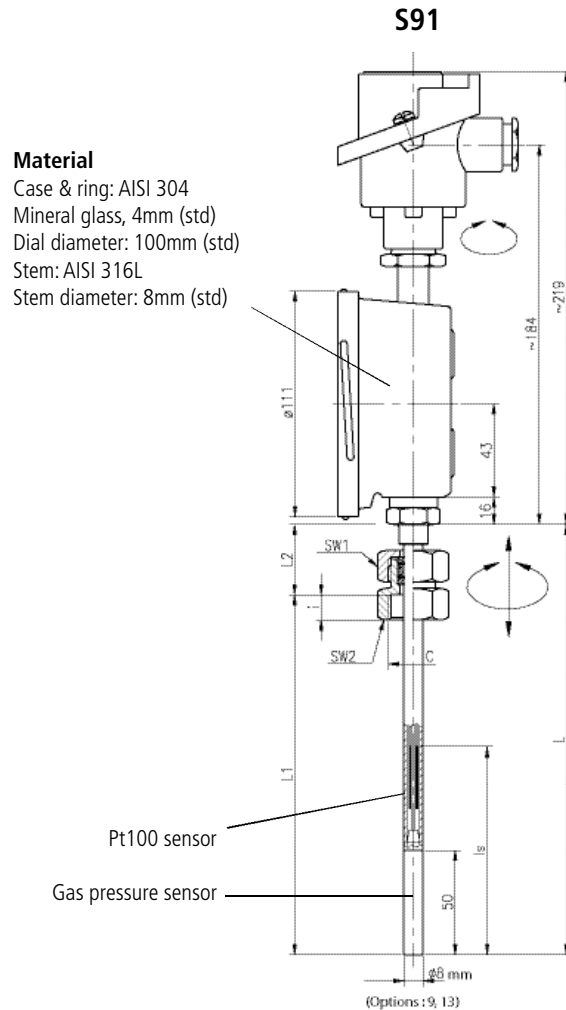
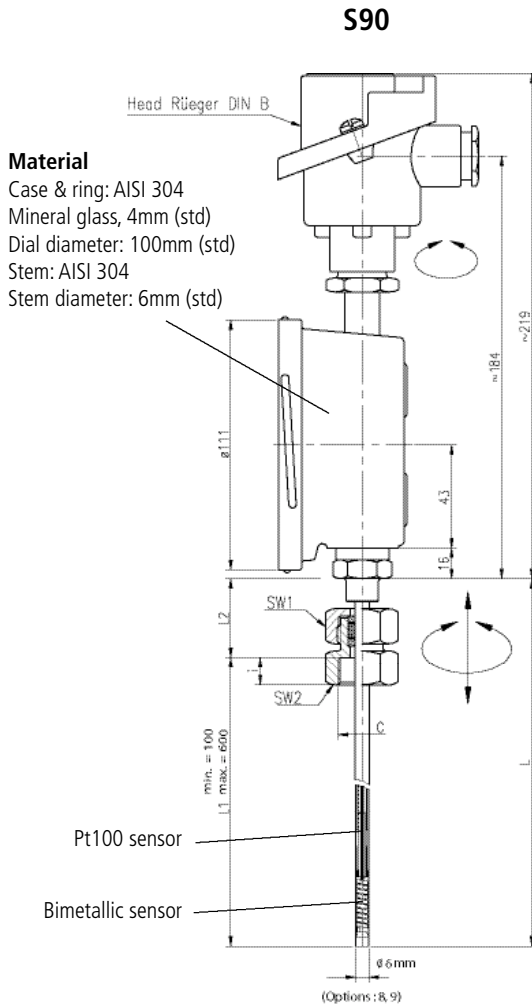
FT S 90/91-E-2.07

RÜEGER

Two-in-one temperature measurement instruments :

- **S 90** : Pt100 thermoresistive probe + bimetallic thermometer
- **S 91** : Pt100 thermoresistive probe + gas pressure thermometer

Types **S 90/91**



Applications

- Chemical & petrochemical industries
- Pharmaceutical industry
- Intrinsically safe

S90 description

The S90 combines a bimetallic thermometer and one or two Pt100 sensors. Thanks to its 6 mm stem diameter, the S90 can substitute any existing Pt100 RTD without modification of the thermowell and without additional cost. The S90 has a temperature span from -70°C to +320°C.

S91 description

The S91 combines a gas pressure thermometer and one or two Pt100 sensor. The S91 has a temperature span from -200°C to + 600°C. On request also available as remote thermometer TFV 100 BI with one or two Pt100 sensors.

Advantages

- The S90/S91 combines a local reading indicator and signal for remote control
- 2 independant sensors in 1 measuring point
- One single thermowell, less installation cost

Accuracy

- RTD, Class B IEC 60 751
- Local indicator, class 1, EN 13190

S | 9 | | | |

Types S90 and S91

Executions

- S90** bimetallic thermometer + Pt100 _____ **0**
S91 gas pressure thermometer + Pt100 _____ **1**

Connection types

- Unthreaded shoulder _____ **A**
 Fixed threaded connection S (std G1/2) _____ **S**
 Swivelling threaded connection T _____ **T**
 Cap connection U (std G1/2) _____ **U**

Output RTD (Ω)

- 1x Pt100 with 3 wires _____ **B**
 2x Pt100 with 3 wires _____ **E**

Temperature range

Please select your standard temperature range (refer to temperature tables)

from to °C

from to °F

Uncoded options (available on request)

- Head types: SCCA, BUZH, DIN A, BUZ, SCCI, BBK (std=DIN B)
- Temperature transmitters, see data sheets S95.1; S95.2; S95.3 (std=wth)
- RTD accuracy class: Cl.A (std=Cl. B)
- Unbreakable acrylic glass; safety glass; hardened glass (std=mineral glass)
- Stem diameters for S90: 8, 9mm (std=6mm)
- Stem diameters for S91: 9, 12, 13mm (std=8mm)

Stem length L to specify:

L_{min} = 120 mm (L = L₁ + 40 mm connection)
L_{max} = 600 mm (L = L₁ + 40 mm connection)

L : **mm**

S90 std temperature ranges

°C		°F	
-70	+ 50	0	+ 250
-30	+ 70	50	+ 400
-30	+ 170		
-30	+ 270		
0	+ 60		
0	+ 100		
0	+ 120		
0	+ 200		
0	+ 250		
0	+ 300		
0	+ 320		

S91 std temperature ranges

°C	
-200	+ 50
-70	+ 40
-30	+ 70
0	+ 60
0	+ 100
0	+ 160
0	+ 200
0	+ 320
0	+ 400
0	+ 500
0	+ 600

Modifications reserved

RUEGER



www.rueger.com www.instrugate.com

Manufacturers of Sensors and Gauges for Temperature & Pressure

RUEGER SA

Ch. de Mongevon 9
 Case postale 98
 1023 CRISSIER 1
 SWITZERLAND

Tel + 41 (0)21 637 32 32
 Fax + 41 (0)21 637 32 00
 E-mail info@rueger.ch

RUEGER GmbH

Plieninger Strasse 58
 70567 STUTTGART
 GERMANY

Tel + 49 (0)711 16-163-0
 Fax + 49 (0)711 16-16333
 E-mail info@rueger.de

RUEGER Sdn Bhd

ASIA Head Quarter
 No. 78-2, Jalan 1/27F
 Bandar Baru Wangsa Maju
 (KLSC) 53300 KUALA LUMPUR
 MALAYSIA

Tel + 603 - 4142 3808
 Fax + 603 - 4142 3909
 E-mail sales@rueger.com.my

BEIJING RUEGER PRECISION INSTRUMENT Co. Ltd

No. A135 Chengshou Road, 5th floor
 Nansanhuan, Chaoyang District
 100078 BEIJING
 P.R. CHINA

Tel + 86 10 8767 7502 / 3379
 Fax + 86 10 8761 3727
 E-mail sales@bjrueger.com